

SUN SCALE



BE Load Cell

- **Stainless Steel** construction
- Capacities from 200 Kg to 5 Ton
- 2 mv/v output
- Metric fine threads, EC standard

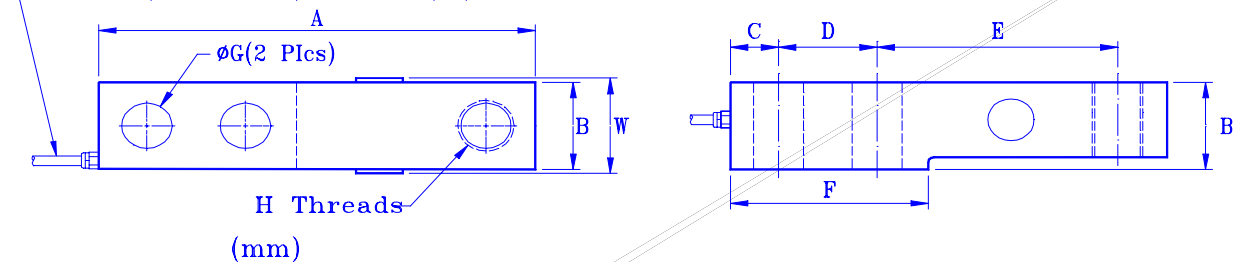
SPECIFICATIONS

Accuracy Class (max. number of intervals)	C1 (1000)	C2 (2000)	C3 (3000)
Rated Capacities	200Kg, 500Kg, 1T, 2T, 5T		
Combined Error (% of R.O.)	0.035	0.025	0.017
Non-Repeatability (% of R.O.)	0.015	0.010	0.010
Minimum Division Size (v min., % of R.O.)	0.030	0.015	0.010
Temperature Coefficient			
Output (ppm/ °C, of load)	16	10	5
Zero (ppm/ °C, of R.O.)	42	21	14
Creep Return (% of load, 30 Min.)	0.050	0.025	0.017
Rated Output (mv/v)	2 ± 0.25%		
Zero Balance (% of R.O.)	± 2		
Excitation (Volt)	10 recommended, 15 Max.		
Input Impedance (Ω)	385 ± 10		
Output Impedance (Ω)	350 ± 1%		
Operating Temperature Range (°C)	-40 to +60		
Environmental Protection (DIN)	IP 65		
Safe Overload (% of R.O.)	150		
Deflection (mm, @ Rated Capacity)	0.3, 0.4, 0.6, 0.8, 1.2		

Example for Order Number: **BE-5T-C3**, **BE**: load cell type, **5T**: capacity in kg or ton,
C3: accuracy class, OIML Class C 3000 divisions.

DIMENSIONS

4-Wire, Ø5mm Shielded Cable,
 3 Meter(200KG ~ 2T), 6 Meter (5T)



Capacity (KG)	A	B	C	D	E	F	ØG	H	W
200KG,500KG 1T,2T	130	31.2	15.9	25.4	76.2	57.2	13.0	M12*P1.75 (M16*P1.5) Optional	36.0
5T	171	37.5	19.1	38.1	95.3	76.2	20.5	M20*P1.5	42.0