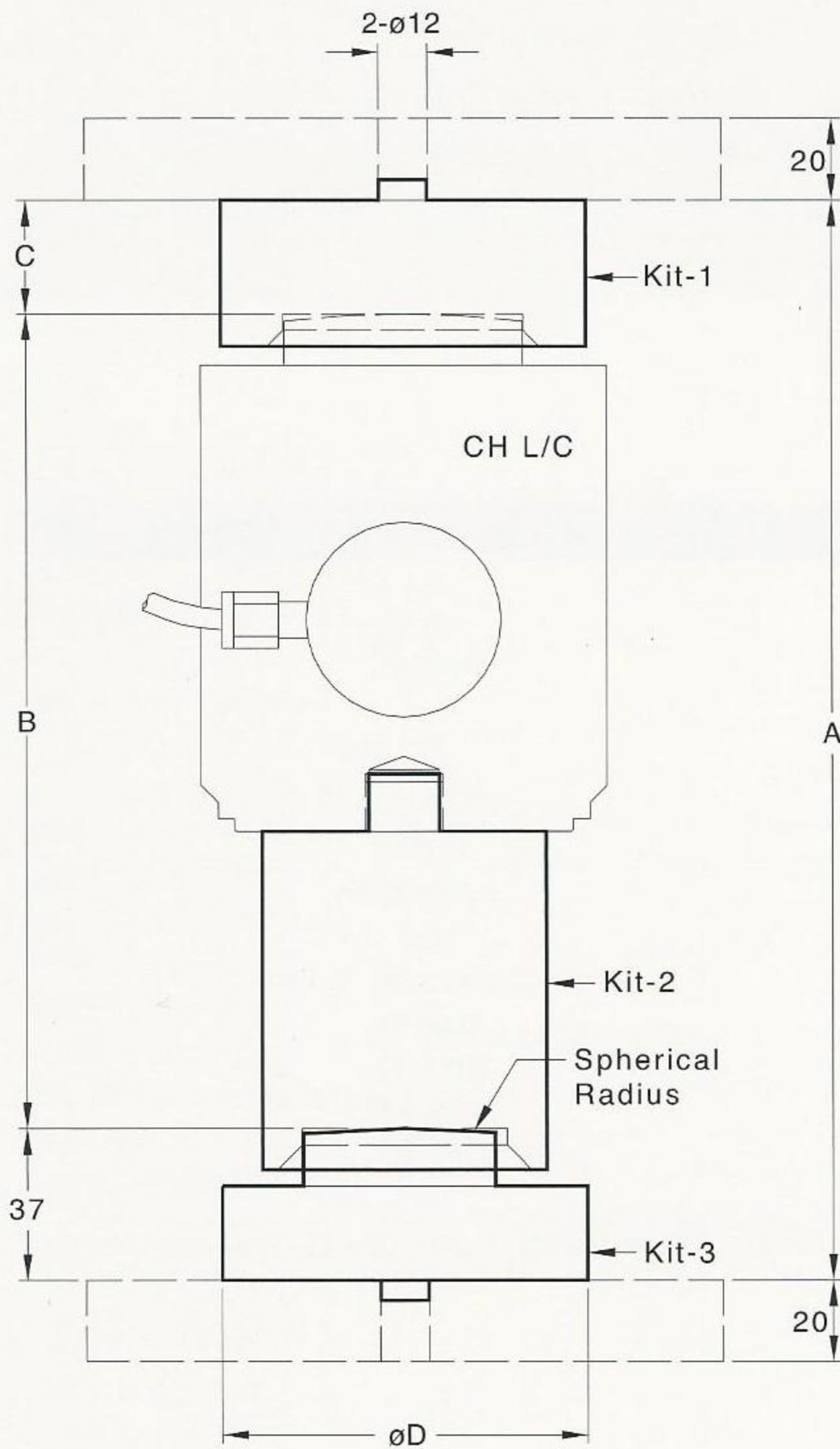




CH & CH2 Mounting Kit



Tall

Pounds & Inches
(Ton & mm)

Capacity	A	B	C	D
10K~65K	8.27 (210)	6.00 (152.5)	0.81 (20.5)	ø2.36 (ø60)
100K~130K	10.43 (265)	7.87 (200)	1.10 (28)	ø3.54 (ø90)
200K	---	---	1.65 (42)	ø4.33 (ø110)

Short

Pounds & Inches
(Ton & mm)

Capacity	A	B	C	D
10K~65K	6.89 (175)	4.63 (117.5)	0.81 (20.5)	ø2.36 (ø60)
100K~130K	8.94 (227)	6.38 (162)	1.10 (28)	ø3.54 (ø90)

Note: 1. Both tall and short versions are available. Tall version is recommended for most applications. For 200k, only kit-1 is available.

2. Anti-rotation mechanism is built into the mounting kit.

3. This mounting kit works only when the side-way movement of the weighbridge or hopper is limited to 1/4 inch (6mm) or less. Proper anti-sliding and/or anti-lifting mechanism must be installed.