

SUN SCALE



SE Load Cell

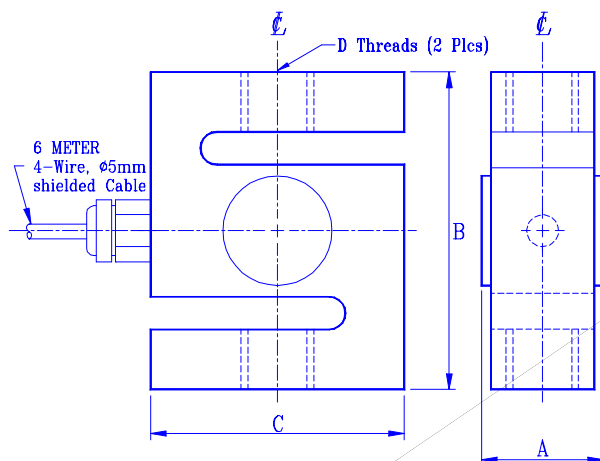
- **Stainless Steel** construction
- Capacities from 50 Kg to 5 Ton
- 2 mv/v output
- Metric fine threads, EC standard

SPECIFICATIONS

Accuracy Class (max. number of intervals)	C1 (1000)	C2 (2000)	C3 (3000)
Rated Capacities	50Kg, 100Kg, 200Kg, 500Kg, 1T, 2T, 5T		
Combined Error (% of R.O.)	0.035	0.025	0.017
Non-Repeatability (% of R.O.)	0.015	0.010	0.010
Minimum Division Size (v min., % of R.O.)	0.030	0.015	0.010
Temperature Coefficient			
Output (ppm/ °C, of load)	16	10	5
Zero (ppm/ °C, of R.O.)	42	21	14
Creep Return (% of load, 30 Min.)	0.050	0.025	0.017
Rated Output (mv/v)	2 ± 0.25%		
Zero Balance (% of R.O.)	± 2		
Excitation (Volt)	10 recommended, 15 Max.		
Input Impedance (Ω)	385 ± 10		
Output Impedance (Ω)	350 ± 1%		
Operating Temperature Range (°C)	-40 to +60		
Environmental Protection (DIN)	IP 65		
Safe Overload (% of R.O.)	150		
Deflection (mm, @ Rated Capacity)	0.10, 0.13, 0.15, 0.22, 0.34, 0.28, 0.35		

Example for Order Number: **SE-5T-C3**, **SE**: load cell type, **5T**: capacity in kg or ton,
C3: accuracy class, OIML Class C 3000 divisions.

DIMENSIONS



Wiring Code: (Tension)

- +Input Red
- Input Black
- +Output White
- Output Green

(mm)

Capacity (KG)	A	B	C	D
50, 100	17	64	50	M8*P1.25
200, 500	24	64	50	M12*P1.75
1000	30	75	50	M20*P1.5
2000	30	100	75	M20*P1.5
5000	43	100	75	M24*P2.0