

SUN SCALE



SPM Load Cell

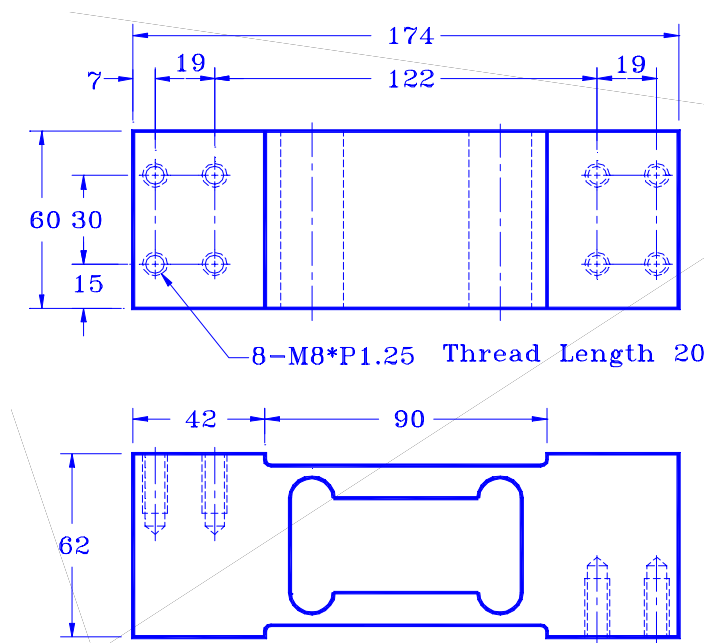
- Aluminum construction
- Capacities from 100 Kg to 300 Kg
- Single Point design
- Metric threads

SPECIFICATIONS

Rated Capacities (Kg)	100, 150, 300
Accuracy Class (max. number of intervals)	C3 (3000)
Rated Output (mv/v)	2.2 ± 10%
Combined Error (% of R.O.)	0.017
Non-Repeatability (% of R.O.)	0.010
Minimum Division Size (v min., % of R.O.)	0.010
Temperature Coefficient	
Output (ppm/ °C, of load)	5
Zero (ppm/ °C, of R.O.)	14
Creep Return (% of load, 30 Min.)	0.017
Zero Balance (% of R.O.)	± 2
Excitation (Volt)	10 recommended, 15 Max.
Input Impedance (Ω)	395 ± 10
Output Impedance (Ω)	350 ± 1%
Operating Temperature Range (°C)	-40 to +60
Environmental Protection (DIN)	IP 65
Safe Overload (% of R.O.)	150
Error due to Eccentric Load (±% of applied load / CM)	0.003
Maximum Platform Size (mm)	400 x 600

Example for Order Number: **SPM-100-C3**, **SPM**: load cell type, **100**: capacity in kg,
C3: accuracy class, OIML Class C 3000 divisions.

DIMENSIONS



Wiring Code:

- +Input Red
- Input Black
- +Output Green
- Output White

4-wire shielded cable, ϕ 5, 1.5 meter