

SUN SCALE



STS Metric Load Cell

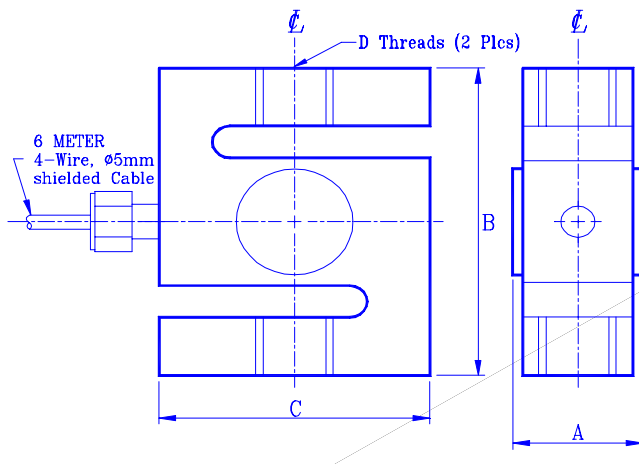
- **Stainless Steel** construction
- Capacities from 50 Kg to 5 Ton
- 3 mv/v output
- Metric threads

SPECIFICATIONS

Accuracy Class (max. number of intervals)	C1 (1000)	C2 (2000)
Rated Capacities	50Kg, 100Kg, 200Kg, 500Kg, 1T, 2T, 5T	
Combined Error (% of R.O.)	0.035	0.025
Non-Repeatability (% of R.O.)	0.015	0.010
Minimum Division Size (v min., % of R.O.)	0.030	0.015
Temperature Coefficient		
Output (ppm/ °C, of load)	16	10
Zero (ppm/ °C, of R.O.)	42	21
Creep Return (% of load, 30 Min.)	0.050	0.025
Rated Output (mv/v)	3 ± 0.25% except 2 for 50kg	
Zero Balance (% of R.O.)	± 2	
Excitation (Volt)	10 recommended, 15 Max.	
Input Impedance (Ω)	385 ± 10	
Output Impedance (Ω)	350 ± 1%	
Operating Temperature Range (°C)	-40 to +60	
Environmental Protection (DIN)	IP 65	
Safe Overload (% of R.O.)	150	
Deflection (mm, @ Rated Capacity)	0.10, 0.15, 0.17, 0.25, 0.40, 0.35, 0.40	

Example for Order Number: **STS-5T-C2**, **STS**: load cell type, **5T**: capacity in kg or ton,
C2: accuracy class, OIML Class C 2000 divisions.

DIMENSIONS



Wiring Code: (Tension)

- +Input Red
- Input Black
- +Output White
- Output Green

Capacity (KG)	A	B	C	D
50, 100	17	63.5	50.8	M8*P1.25
200, 500	24	63.5	50.8	M12*P1.75
1000	30	76	50.8	M12*P1.75
2000	30	101.6	76.2	M20*P2.5
5000	43	101.6	76.2	M24*P2.0